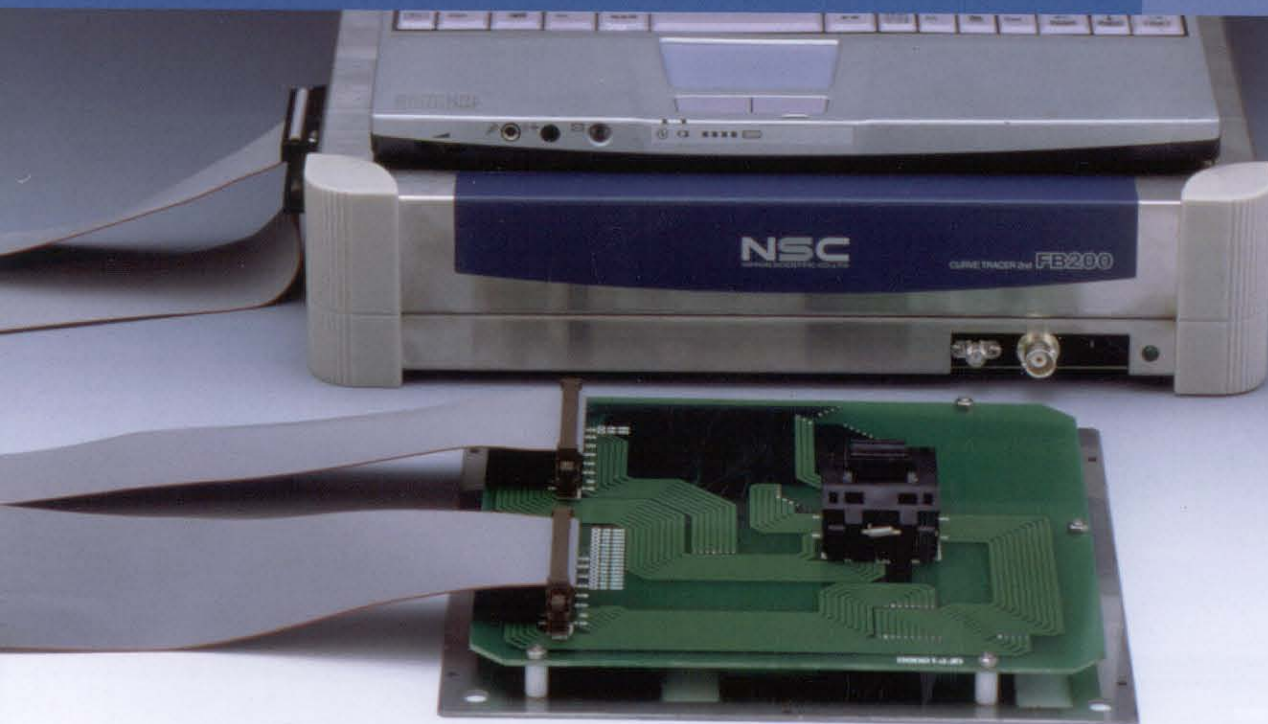


FX SERIES

Curve Tracer 2nd

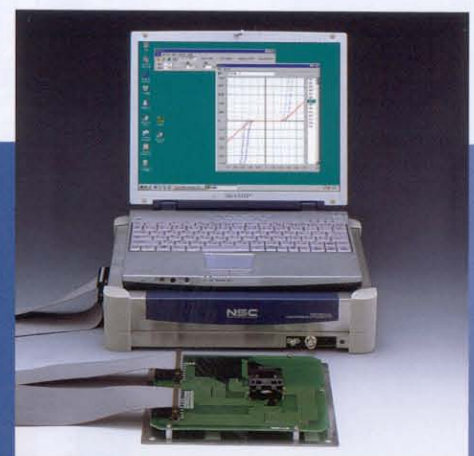
FB200

Compact type Curve tracer with manual probing function



Functions & Characteristics

- Probing-Automatic/Manual, both available
- Open/Short testing function for Input/Output pin
- Pin Assign function using External Power Supply
- Comparing function with a Known-good-device
- Compact design with parallel or horizontal placing
- Saving function by graph & data



NSC
NIPPON SCIENTIFIC CO., LTD.

Curve Tracer 2nd –New Entry in the market

We would like to introduce our new Handy Curve Tracer to meet the Markets requirements.

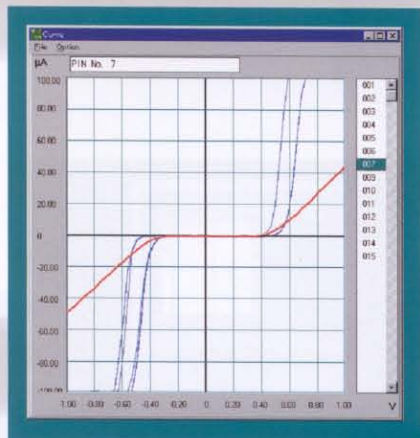
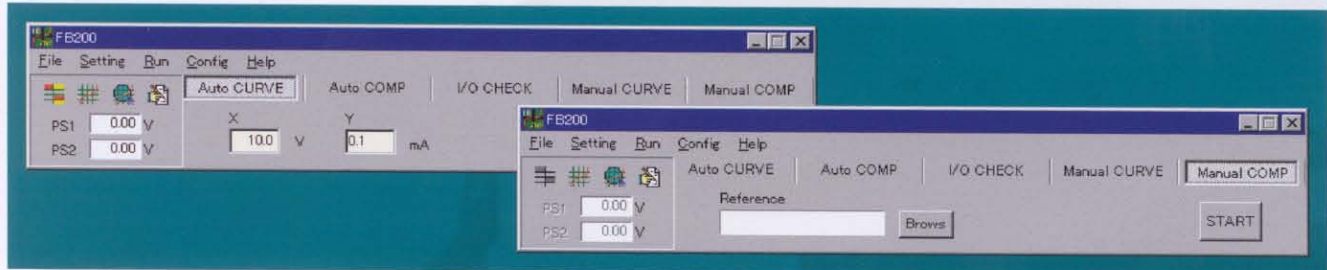
Simple & Automatic Operation, Speedy Result
and furthermore Manual Probing Function attached!

NSC proposes you have this Curve Tracer just beside your desk PC to be used as a simple use Tester.

Compact design
with Flexible placing with
Parallel / Horizontal



Setting screen



Comparing Function with Known-Good-Device by Automatic/Manual Mode

You can use the data measured from previous device for comparing with other devices. Just measure the comparing device on this screen and you can compare with the standard data from your Known-Good-Device.

On Automatic mode, OK/NG are judged with set tolerance. On the Manual mode, large deviation is pointed out.

Pin	Atr	Jdg	Comment
1	OK	OK	D1
2	OK	OK	D2
3	OK	OK	D3
4	OK	OK	D4
5	OK	OK	Vdd
6	OK	OK	Vdd
7	NG	NG	OUT1
8	OK	OK	OUT2
9	OK	OK	VCC
10	OK	OK	CLK
11	OK	OK	GND
12	OK	OK	STB
13	OK	OK	OUT3
14	OK	OK	RST
15	OK	OK	GO

Pin	NG	Max. A	Min. A	Out
15	-0.5625	-0.0010	-0.0030	-0.0030
16	-0.56125	-0.0025	-0.0021	-0.0024
17	-0.5	-0.0018	-0.0013	-0.0013
18	-0.46875	-0.0010	-0.0009	-0.0011
19	-0.4375	-0.0000	-0.0007	-0.0001
20	-0.40625	-0.0008	-0.0006	-0.0002
21	-0.375	-0.0005	-0.0005	0.0000
22	-0.34375	-0.0006	-0.0006	0.0000
23	-0.3125	-0.0004	-0.0004	0.0000
24	-0.28125	-0.0007	-0.0004	-0.0003
25	-0.25	-0.0007	-0.0004	-0.0003
26	-0.21875	-0.0005	-0.0006	0.0001
27	-0.1875	-0.0006	-0.0005	-0.0001
28	-0.15625	-0.0005	-0.0006	0.0001
29	-0.125	-0.0009	-0.0003	-0.0006
30	-0.09375	-0.0007	-0.0006	0.0004
31	-0.0625	-0.0004	-0.0006	0.0000
32	-0.03125	-0.0005	-0.0003	-0.0002
33	0	-0.0007	-0.0003	-0.0004

Probing for V/I Characteristics

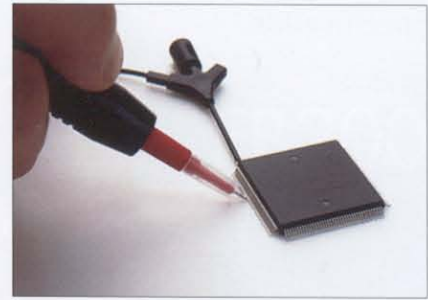
Automatic/Manual probing is available

Automatic probing is possible to get V/I characteristics for all pins by pressing the Start button, but only when using a DUT board attached IC socket.

Manual probing can be used to get V/I characteristics by probing on any pin without using DUT board attached IC socket.

This manual probing is very useful for low pin count devices.

It can take V/I characteristics between the contact pin by using manual probing and GND clip, with switching only located on manual probing, and measured results are showed with measuring order. You can smoothly measure and see the result.



Manual Curve Tracer

Only pressing button located on manual probing, DUT board is not necessary with this method. Just contact to any pin by manual probing and press the button on it.

Open/Short Testing function for Input & Output pin

Open/Short judgment of the device on DUT board is promptly done.

Pin	Atr	Jdg	Comment
1	IO	OK	D1
2	IO	OK	D2
3	IO	OK	D3
4	IO	OK	D4
5	IO	OK	Vdd
6	IO	OK	Vdd
7	IO	OPEN	D5
8	IO	OK	CLK
9	IO	OK	Dcc
10	IO	OK	STB
11	IO	OK	
12	IO	OK	AD1
13	IO	SHORT	AD2
14	IO	OK	AD3

Pin Assigning with External Power Supply

(2 External Power Supply can be used if necessary)

Pin Assign condition supplied the wide range voltage is available with using FB200 relay matrix function after connecting your External Power Supply to the input terminal on side face of FB200.

Pin	Atr	Jdg	Comment
1	IO	OK	D1
2	IO	OK	D2
3	IO	OK	D3
4	IO	OK	D4
5	IO	OK	Vdd
6	IO	OK	Vdd
7	IO	OK	D5
8	IO	OK	CLK
9	IO	OK	Vcc
10	IO	OK	STB
11	IO	OK	GND
12	IO	OK	AD1
13	IO	OK	AD2
14	IO	OK	AD3

Result is indicated and saved with numeric and Graph

Measured result (data) is saved with graph and numeric on text file. It is easy to use for report and investigation at a later time.

Speed for Curve Tracing is selectable

Change of Current is available to see visually by supplying voltage slowly.

Automatic measuring is available for 64pins (standard) and up to 128pins (optionally) - For DUT board use.

Setting condition is available to be saved and used anytime

Measuring condition is saved as individual file with text format to be used it easily anytime later.

Specification

FB200

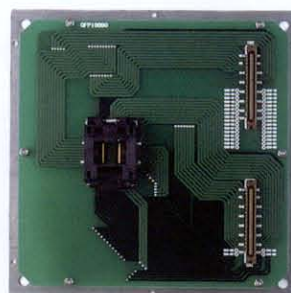
Curve Tracer	Method	Voltage Force/Current Force(selectable)
	Mode	Automatic/Manual
	Voltage range	±10V (Voltage Force)
	Current range	1μA,10μA,100μA,1mA,10mA,100mA (Current Force)
	Accuracy	Voltage:±3%FS Current:±3%FS (1μA range--±5%FS)
	Compare mode	Measured Curve compared with Known-Good-Device' curve
	Measuring Pin	64pins as standard, available up to 128pins optionally (Automatic mode)
	Open/Short test	Judgment
Current range		10μA/100μA (selectable)
Result		OPEN/SHORT/OK
Power Supply Voltage		AC90~200V
Output signal	Connector	KEL 8830E-068-170L (plug- 8825E-068-175)
		Output by each 64pin
Requirement for PC	OS	Windows 98, ME, 2000, XP
	Interface	USB
External size		W480×D256 H68mm
Weight		approx. 2.5kg
Standard accessory		Manual Proving, AC adapter
Optional accessories		DUT board, Flat cable-1m, Footswitch

*Windows is the registered trademark of Microsoft Corporation in USA.

*Specification might be modified for improvement without any notice.



Standard accessory-handy manual probing
(Foot switch for manual probing is available to)



Optional DUT board



NIPPON SCIENTIFIC CO.,LTD.

Head Office

1-28-6, Toshin-cho, Itabashi-ku, Tokyo Japan 174-0064

TEL:81-3-3958-1411 FAX:81-3-3958-1412

Singapore Branch

3016, Bcdok North Avenue 4, #08 01, Eastech, Singapore 489947

Tel:65-67444776 Fax:65-67444786 Pager:93047918

Email:nscsg@pacific.net.sg

FB200E109032